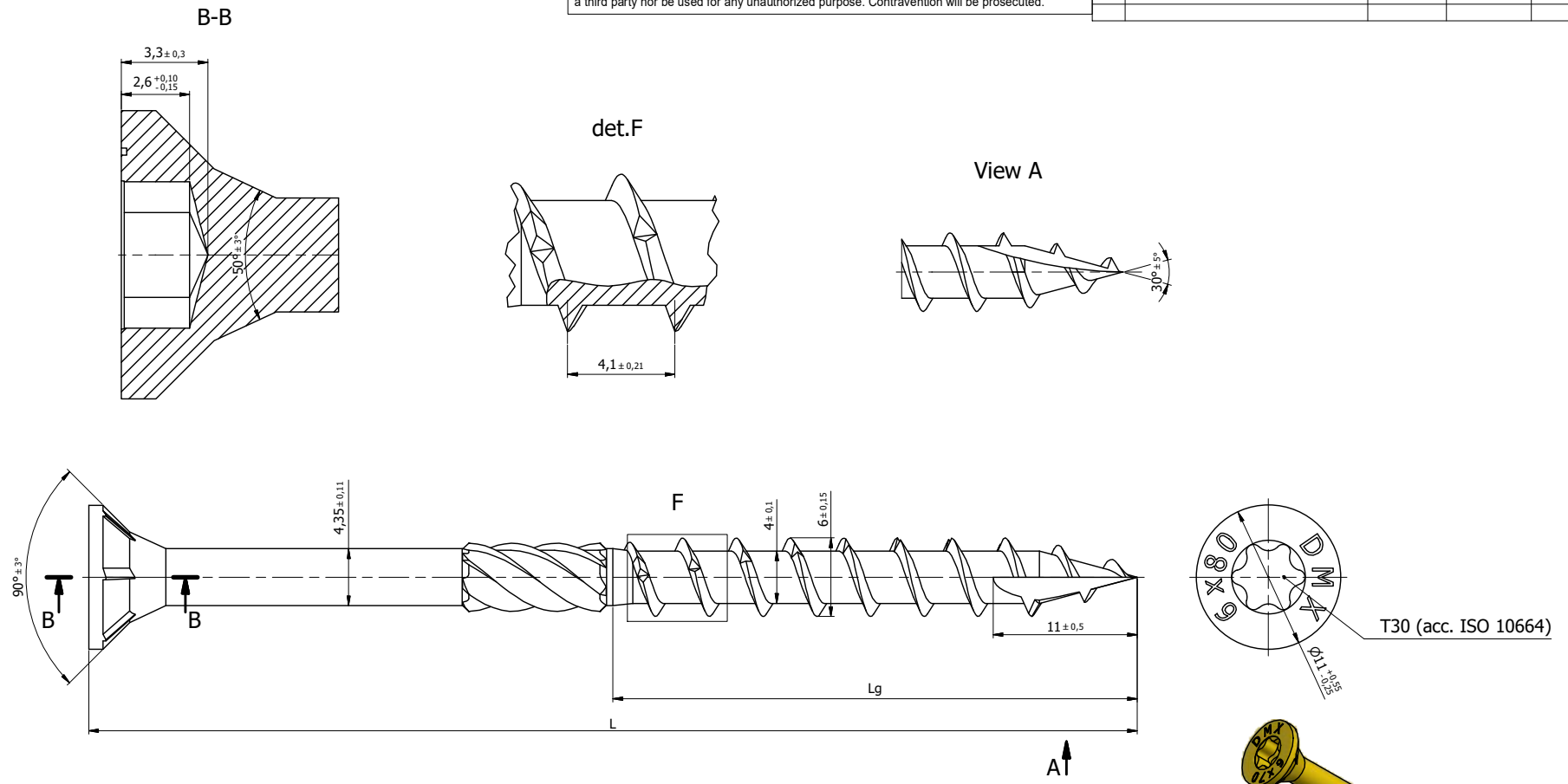


This document is the absolute property of DOMAX Sp. z o.o. This document must not be copied without the written permission of DOMAX Sp. z o.o. The contents thereof must not be disclosed to a third party nor be used for any unauthorized purpose. Contravention will be prosecuted.

Rev	Explanation	Date	Revised by	Approved by



- Note:
- General tolerances EN 22768 mK.
 - Surface Fe/Zn 12c acc. EN ISO 2081
 - Lengths L=40 and L=50 [mm] without ribs.

Index	Name	L [mm]	Tolerance	Lg [mm]	Tolerance	Surface [cm ²]	Weight [g]
310604	CS 06040	40	+/-1	30	+/-1	8,7	5,2
310605	CS 06050	50	+/-1	30	+/-1	10,1	6,4
310606	CS 06060	60	+/-1	36	+/-1	12	7,5
310607	CS 06070	70	+/-1	40	+/-1	13,73	8,65
310609	CS 06090	90	+/-1	50	+/-1	17	10,9

-	Rod	-	Ø4,35	10B21	-	-
Item	Identification	Amt.	Specification	Raw material	Surface [dm ²]	Weight [kg]
Design	K. Rytlewski	Checked	Approved	Code	CS-F	
Drawn	K. Rytlewski					Sheet
Index	08.11.2016					1/1
	Date					Rev
domax			Screw CS-F 6			
DOMAX Sp. z o.o.			CS-F 6			

